



User Guide for the Configuration and Access to **eduroam** wireless network for **Windows 7** operating systems

1. Click on the **“Network Connections”** icon (Fig.1.1) or **“Wireless Network Connections”** icon (Fig.1.2) located at the right side of your computer’s taskbar and then click on the **“Open Network and Sharing Center”** option



Fig.1.1

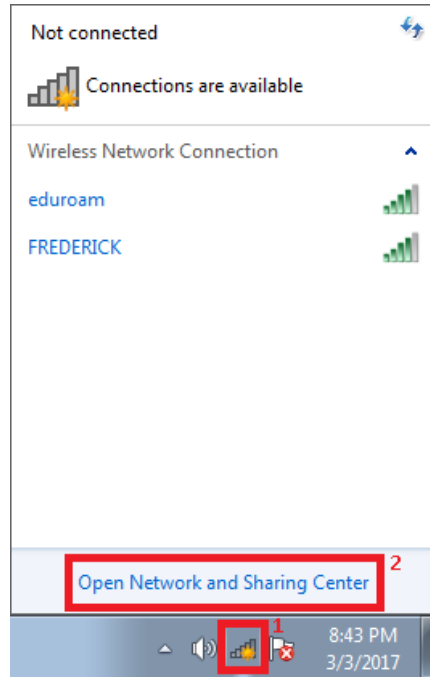


Fig.1.2

2. Click on the **“Manage wireless networks”** located at the left side on the next window

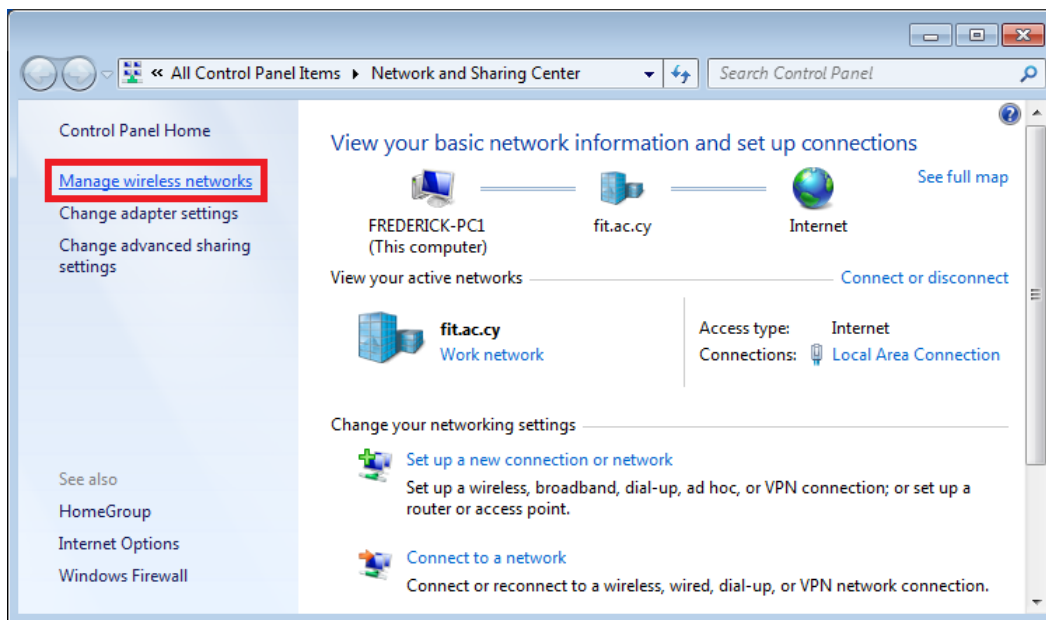


Fig.2.1



3. If the “**eduroam**” network is **NOT** shown proceed to **step 4**, otherwise click on the “**eduroam**” network then click on the “**Remove**” button and click “**Yes**” to confirm it

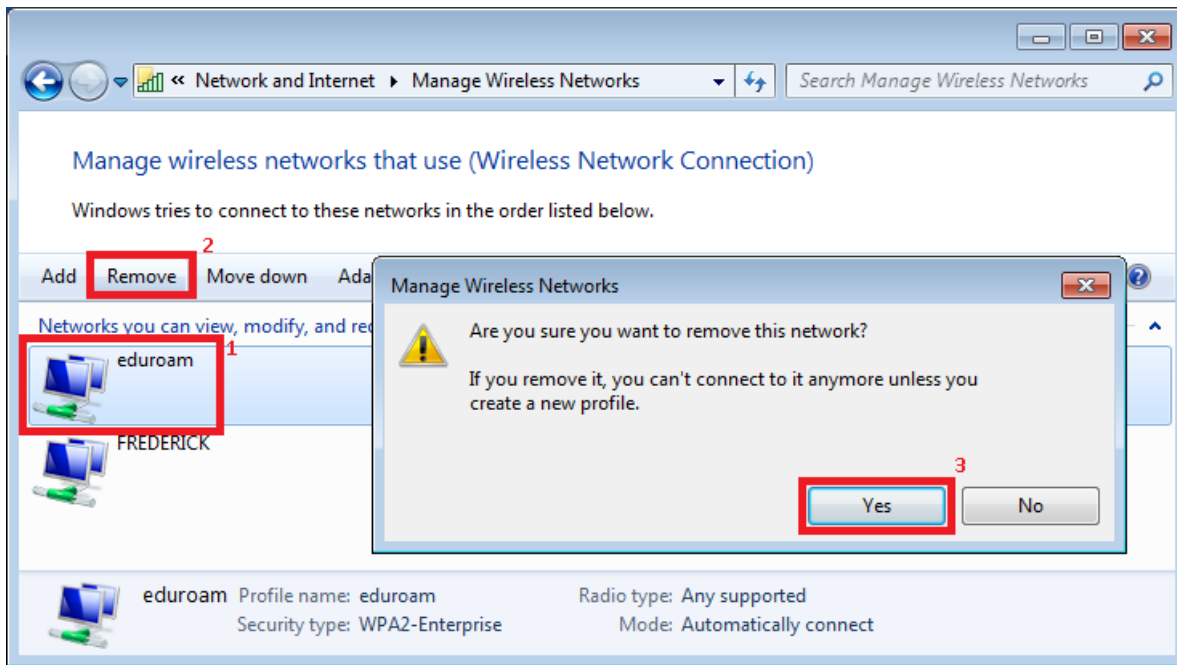


Fig.3.1

4. Click on the “**Add**” button to create the **eduroam** network profile

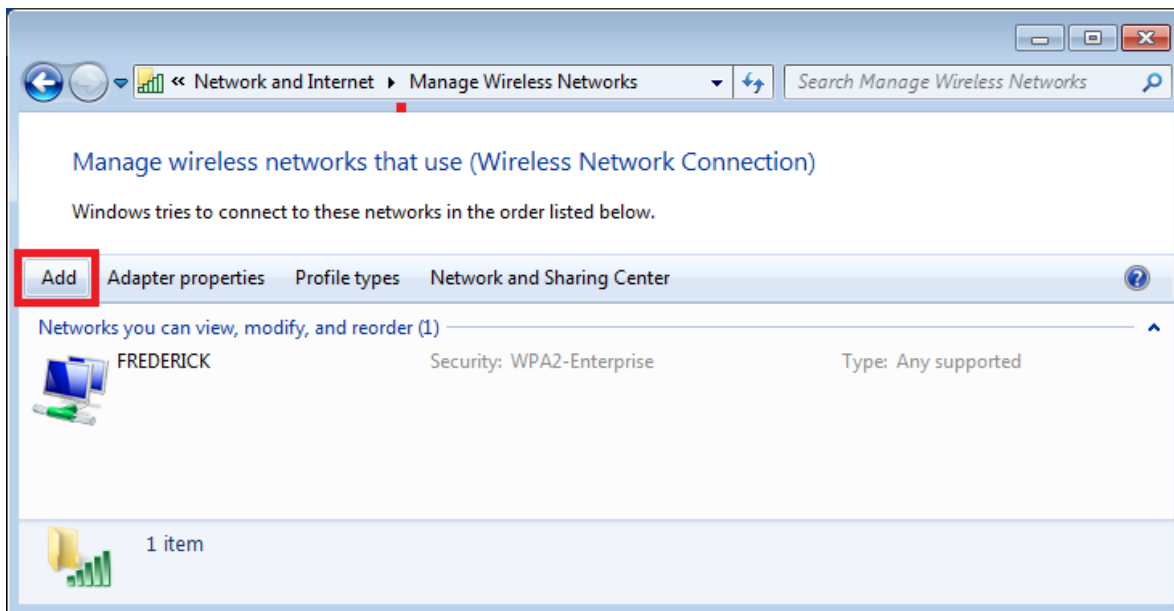


Fig.4.1



5. Click on the “Manually create a network profile” option from the next window

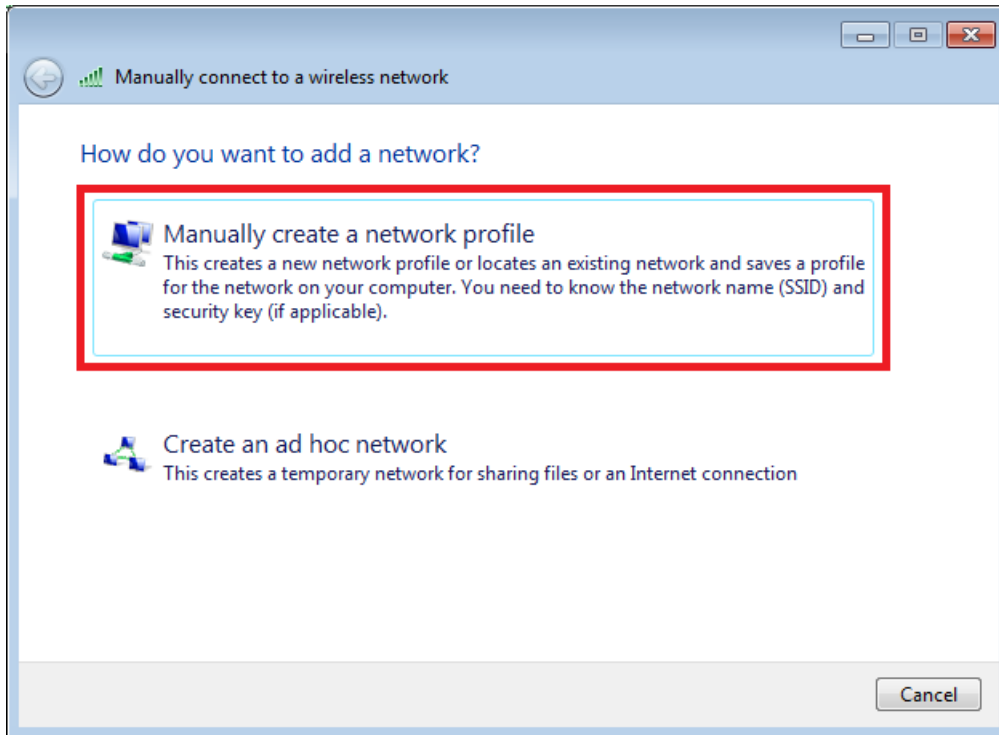
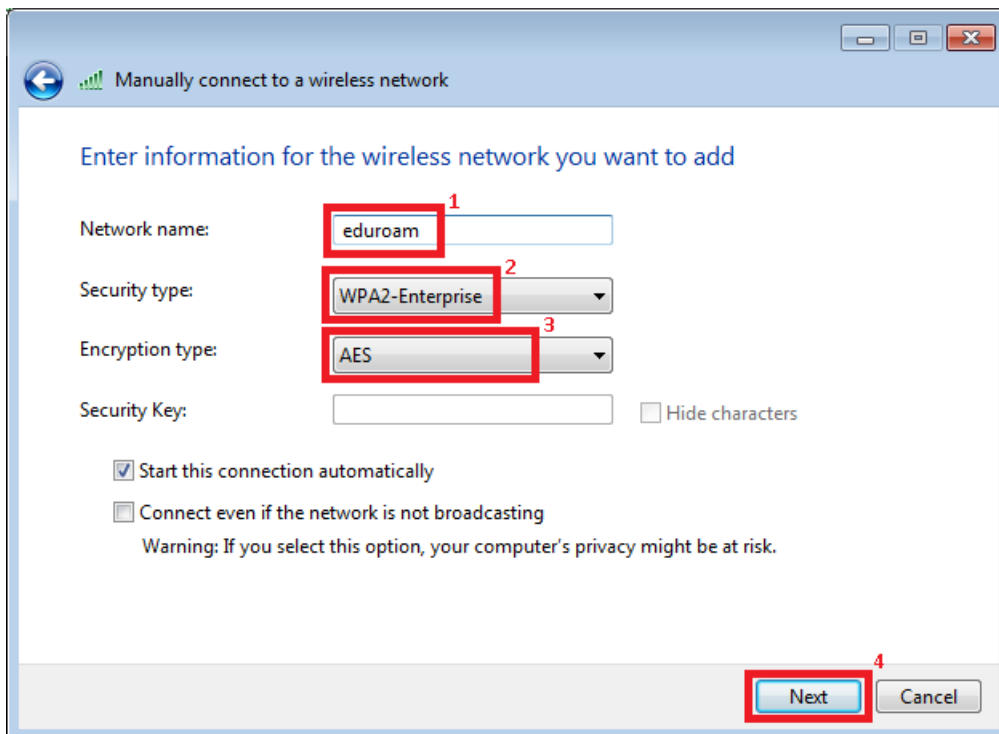


Fig.5.1

6. Complete the following fields on the next window and click on the “Next” button:



Network name:
eduroam

Security type:
WPA2-Enterprise

Encryption type:
AES

Fig.6.1



7. Click on the “Change connection settings” option to configure the network settings

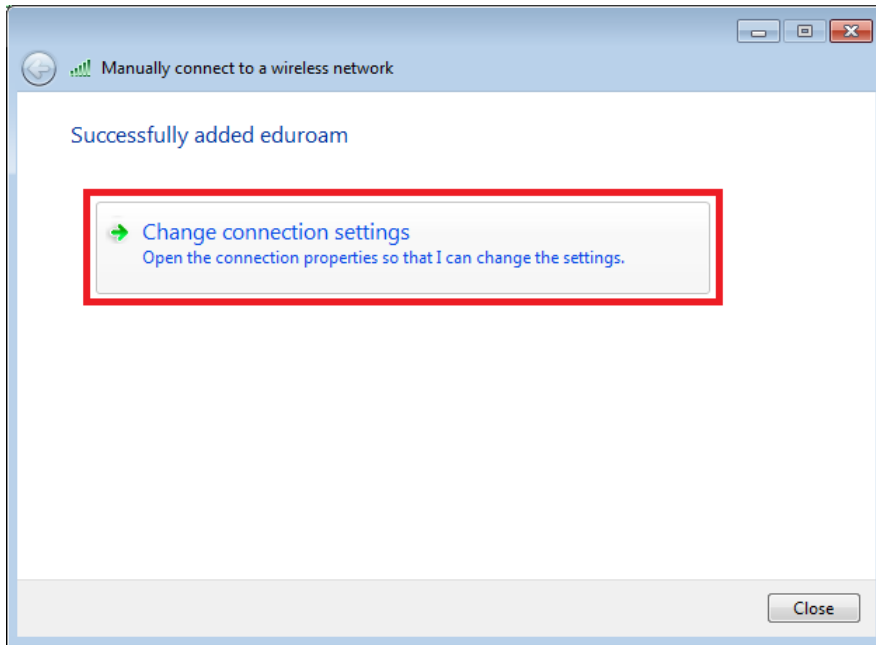
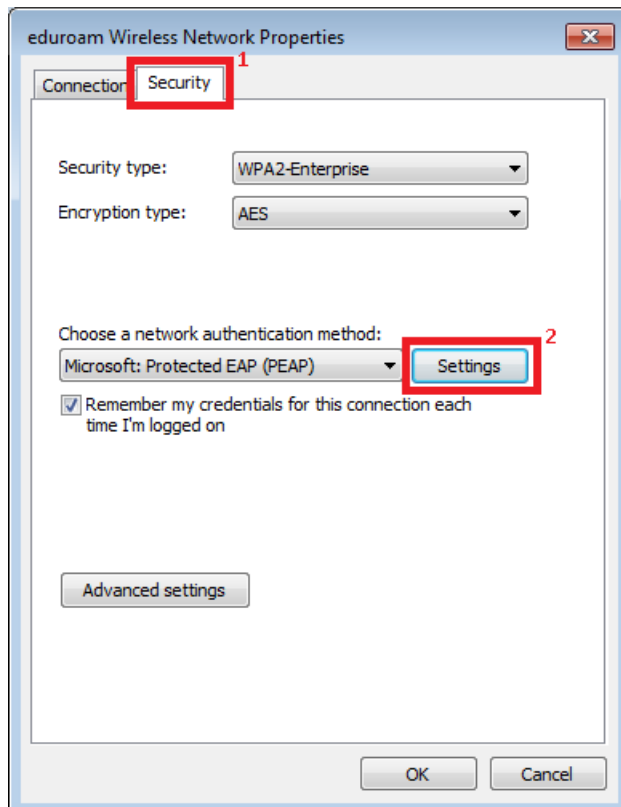


Fig.7.1

8. Go to the “Security” tab, make sure that all fields are completed as shown in the following image, and then click on the “Settings” button



Security type:
WPA2-Enterprise
Encryption type:
AES
Choose a network authentication method:
Microsoft: Protected EAP (PEAP)

Fig.8.1



- 9. Un-check the option “Validate server certificate” on the next window, choose “Secured password (EAP-MSCHAP v2)” on the “Select Authentication Method” field, and then click on the “Configure” button

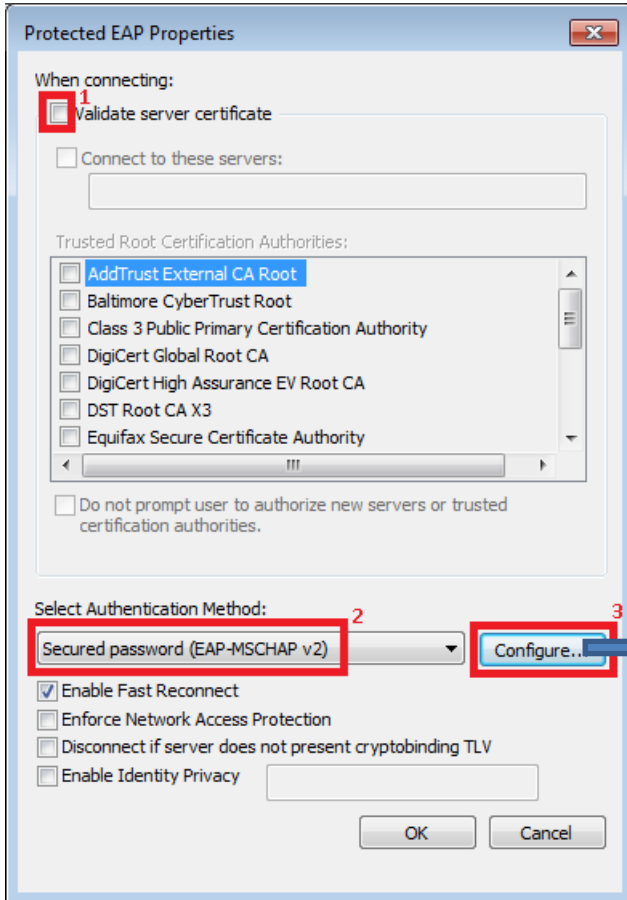


Fig.9.1

- 10. Un-Check the option “Automatically use my Windows logon name and password (and domain if any)” and click OK

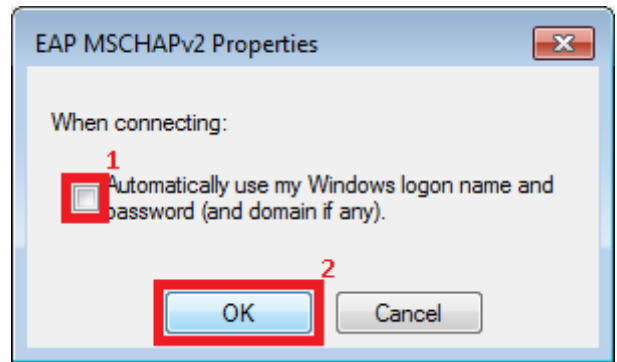


Fig.10.1

- 11. Click OK button to close the “Protected EAP Properties” (Fig.11.1) window.
The “eduroam Wireless Network Properties” (Fig.11.2) window SHOULD remain open.

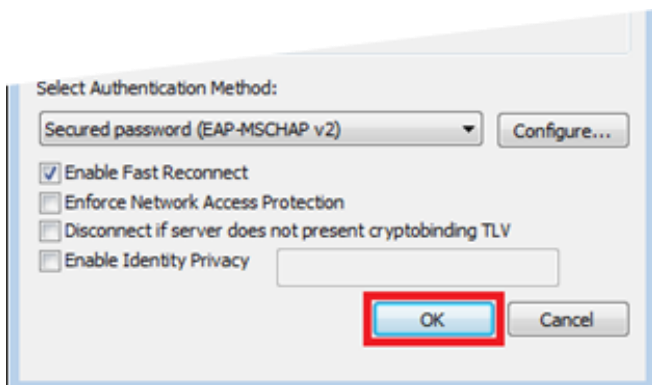


Fig.11.1

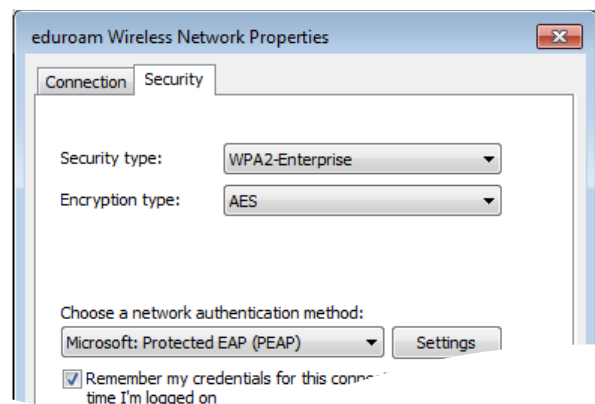


Fig.11.2



12. Click on the “Advanced settings” button from the “eduroam Wireless Network Properties” window

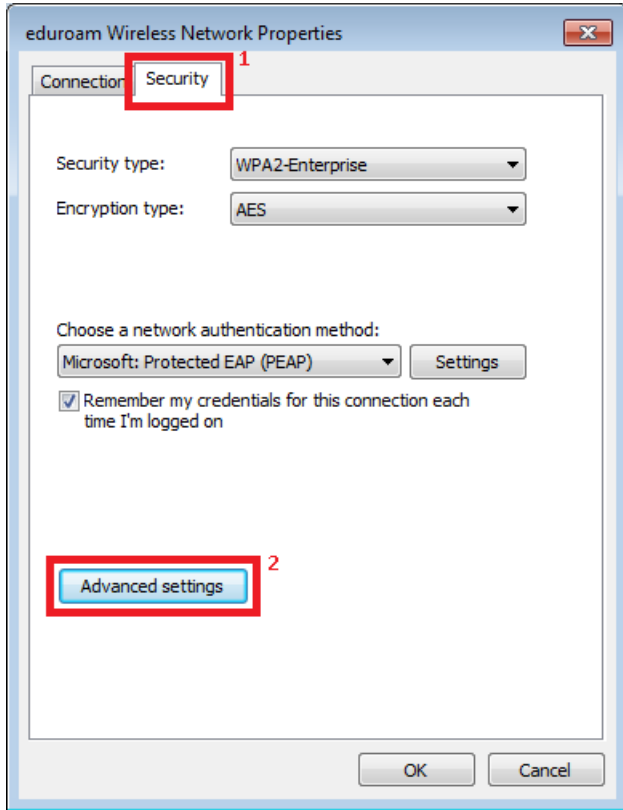


Fig.12.1

13. Check the “Specify authentication mode” option, select “User authentication” from the drop-down list, and then click on the “Save credentials” button for saving your `username@fit.ac.cy` and `password`

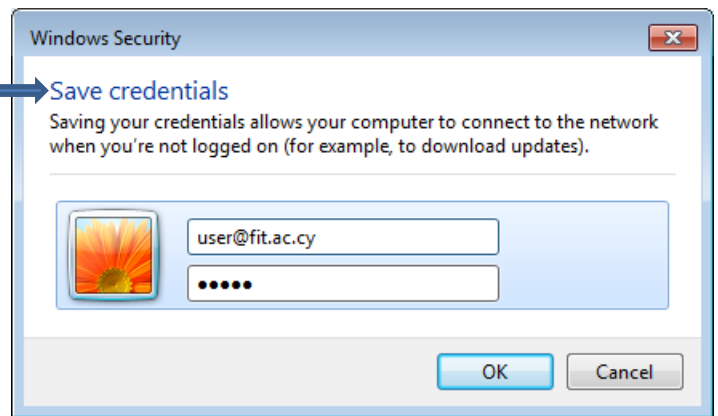
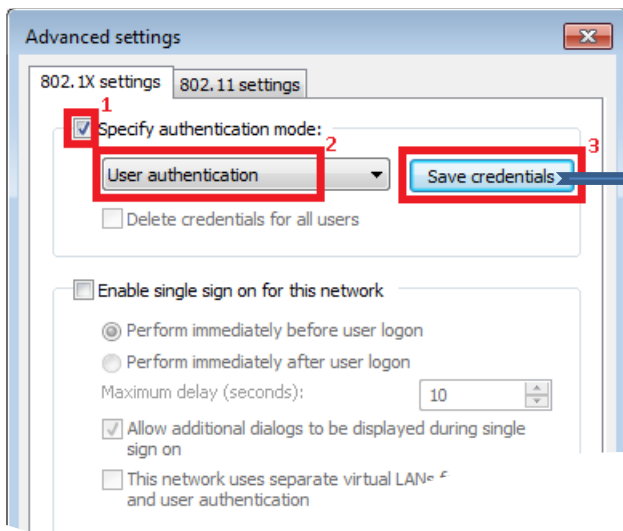


Fig.13.2

Fig.13.1



14. Click on the **OK** button for closing the “Advanced settings” (Fig.14.1) window, then click on the **OK** button for closing the “eduroam Wireless Network Properties” (Fig.14.2) window, and then click on the “Close” button for closing the “Successfully added eduroam” (Fig.14.3) window

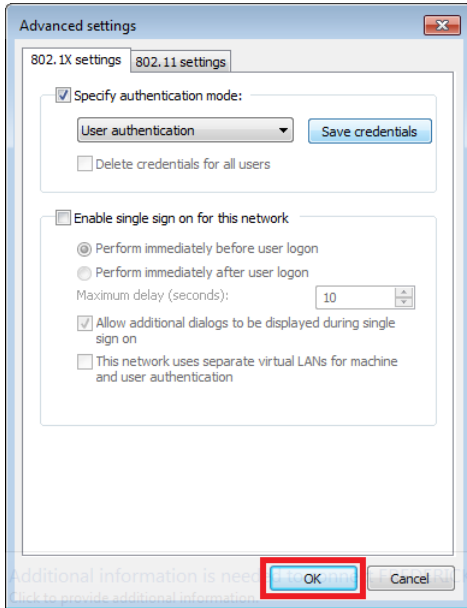


Fig.14.1

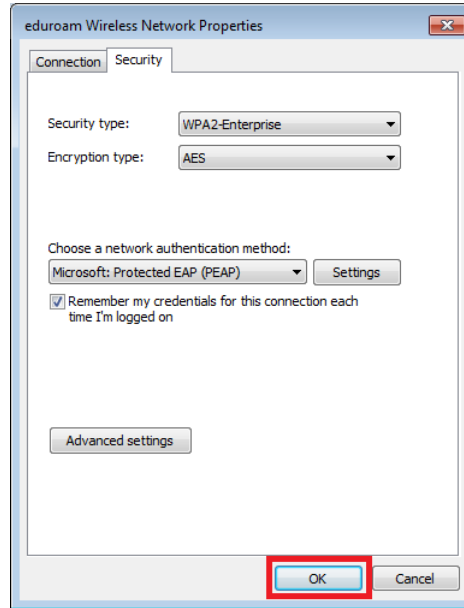


Fig.14.2

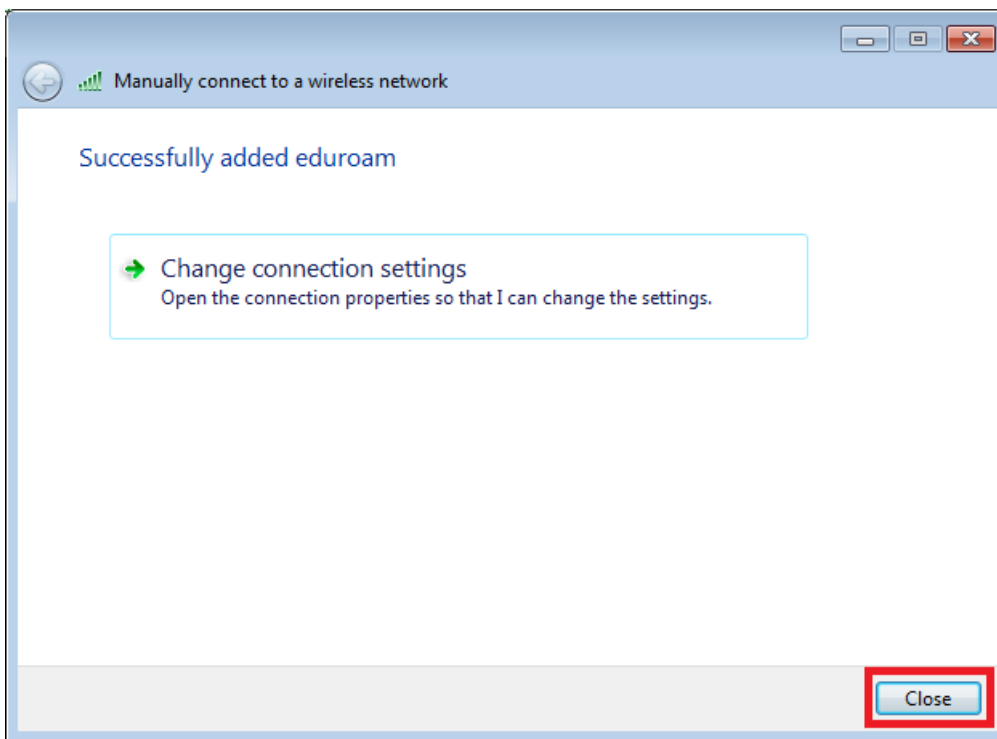


Fig.14.3



- 15. The connection will begin automatically and you can view information on which network you are connected by clicking on the **“Network Connections”** icon located at the right side of your computer’s taskbar

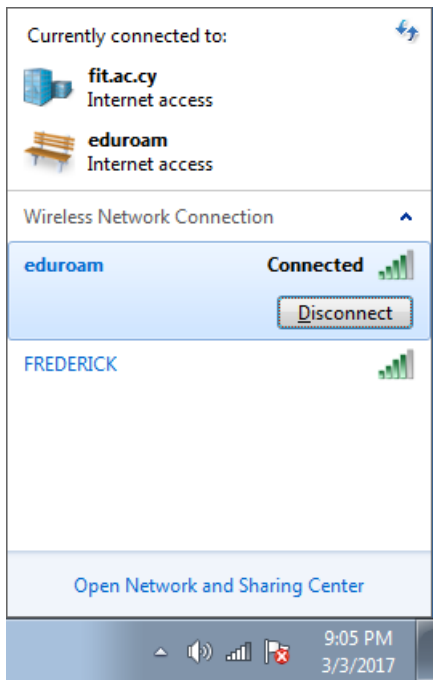


Fig.15.1

- 16. In case the connection fails to start automatically, click on the **“Network Connections”** icon located at the right side of your computer’s taskbar, select **“eduroam”** from the list of available networks and click on the **“Connect”** button

Please note, that you **may** have to restart your computer for the changes to take effect

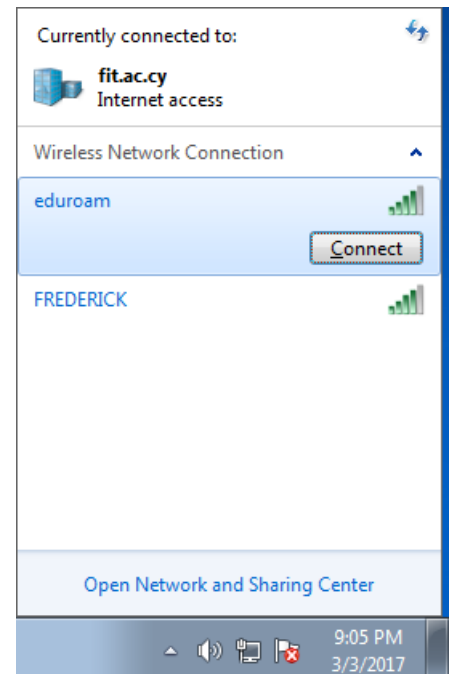


Fig.16.1